



DEPARTMENT OF THE ARMY
U.S. ARMY CORPS OF ENGINEERS, ST. PAUL DISTRICT
332 MINNESOTA STREET, SUITE E1500
ST. PAUL, MN 55101-1323

MVP

19 November 2025

MEMORANDUM FOR RECORD

SUBJECT: US Army Corps of Engineers (Corps) Approved Jurisdictional Determination in accordance with the "Revised Definition of 'Waters of the United States'"; (88 FR 3004 (January 18, 2023) as amended by the "Revised Definition of 'Waters of the United States'; Conforming" (8 September 2023) ,¹ MVP-2025-01090, MFR 1 of 1.²

BACKGROUND. An Approved Jurisdictional Determination (AJD) is a Corps document stating the presence or absence of waters of the United States on a parcel or a written statement and map identifying the limits of waters of the United States on a parcel. AJDs are clearly designated appealable actions and will include a basis of JD with the document.³ AJDs are case-specific and are typically made in response to a request. AJDs are valid for a period of five years unless new information warrants revision of the determination before the expiration date or a District Engineer has identified, after public notice and comment, that specific geographic areas with rapidly changing environmental conditions merit re-verification on a more frequent basis.⁴

On January 18, 2023, the Environmental Protection Agency (EPA) and the Department of the Army ("the agencies") published the "Revised Definition of 'Waters of the United States,'" 88 FR 3004 (January 18, 2023) ("2023 Rule"). On September 8, 2023, the agencies published the "Revised Definition of 'Waters of the United States'; Conforming", which amended the 2023 Rule to conform to the 2023 Supreme Court decision in *Sackett v. EPA*, 598 U.S., 143 S. Ct. 1322 (2023) ("*Sackett*").

This Memorandum for Record (MFR) constitutes the basis of jurisdiction for a Corps AJD as defined in 33 CFR §331.2. For the purposes of this AJD, we have relied on Section 10 of the Rivers and Harbors Act of 1899 (RHA),⁵ the 2023 Rule as amended,

¹ While the Revised Definition of "Waters of the United States"; Conforming had no effect on some categories of waters covered under the CWA, and no effect on any waters covered under RHA, all categories are included in this Memorandum for Record for efficiency.

² When documenting aquatic resources within the review area that are jurisdictional under the Clean Water Act (CWA), use an additional MFR and group the aquatic resources on each MFR based on the TNW, the territorial seas, or interstate water that they are connected to. Be sure to provide an identifier to indicate when there are multiple MFRs associated with a single AJD request (i.e., number them 1, 2, 3, etc.).

³ 33 CFR 331.2.

⁴ Regulatory Guidance Letter 05-02.

⁵ USACE has authority under both Section 9 and Section 10 of the Rivers and Harbors Act of 1899 but for convenience, in this MFR, jurisdiction under RHA will be referred to as Section 10.

MVP

SUBJECT: 2023 Rule, as amended, Approved Jurisdictional Determination in Light of *Sackett v. EPA*, 143 S. Ct. 1322 (2023), MVP-2025-01090

as well as other applicable guidance, relevant case law, and longstanding practice in evaluating jurisdiction.

1. SUMMARY OF CONCLUSIONS.

- a. Provide a list of each individual feature within the review area and the jurisdictional status of each one (i.e., identify whether each feature is/is not a water of the United States and/or a navigable water of the United States).
 - i. Wetland 1 (0.87 acre), non-jurisdictional
 - ii. Wetland 2 (8.85 acres), non-jurisdictional
 - iii. Wetland 3 (3,350 sq. ft), non-jurisdictional

2. REFERENCES.

- a. "Revised Definition of 'Waters of the United States,'" 88 FR 3004 (January 18, 2023) ("2023 Rule")
 - b. "Revised Definition of 'Waters of the United States'; Conforming" 88 FR 61964 (September 8, 2023)
 - c. *Sackett v. EPA*, 598 U.S. 651, 143 S. Ct. 1322 (2023)
 - d. "Memorandum To The Field Between The U.S. Department Of The Army, U.S. Army Corps Of Engineers And The U.S. Environmental Protection Agency Concerning The Proper Implementation Of 'Continuous Surface Connection' Under The Definition Of "Waters Of The United States" Under The Clean Water Act" (March 12, 2025)
3. REVIEW AREA. The Corps review area is comprised of Wetlands 1, 2 and 3 located on the 40-acre property in Wood County, Wisconsin. Latitude: 44.455046 Longitude: -90.08232. The Corps review area is shown on the enclosed figure labeled: MVP-2025-01090, AJD Figure 1.
 4. NEAREST TRADITIONAL NAVIGABLE WATER (TNW), THE TERRITORIAL SEAS, OR INTERSTATE WATER TO WHICH THE AQUATIC RESOURCE IS CONNECTED. N/A
 5. FLOWPATH FROM THE SUBJECT AQUATIC RESOURCES TO A TNW, THE TERRITORIAL SEAS, OR INTERSTATE WATER. N/A

MVP

SUBJECT: 2023 Rule, as amended, Approved Jurisdictional Determination in Light of *Sackett v. EPA*, 143 S. Ct. 1322 (2023), MVP-2025-01090

6. SECTION 10 JURISDICTIONAL WATERS⁶: Describe aquatic resources or other features within the review area determined to be jurisdictional in accordance with Section 10 of the Rivers and Harbors Act of 1899. Include the size of each aquatic resource or other feature within the review area and how it was determined to be jurisdictional in accordance with Section 10.⁷ N/A
7. SECTION 404 JURISDICTIONAL WATERS: Describe the aquatic resources within the review area that were found to meet the definition of waters of the United States in accordance with the 2023 Rule as amended, consistent with the Supreme Court's decision in *Sackett*. List each aquatic resource separately, by name, consistent with the naming convention used in section 1, above. Include a rationale for each aquatic resource, supporting that the aquatic resource meets the relevant category of "waters of the United States" in the 2023 Rule as amended. The rationale should also include a written description of, or reference to a map in the administrative record that shows, the lateral limits of jurisdiction for each aquatic resource, including how that limit was determined, and incorporate relevant references used. Include the size of each aquatic resource in acres or linear feet and attach and reference related figures as needed.
 - a. Traditional Navigable Waters (TNWs) (a)(1)(i): N/A
 - b. The Territorial Seas (a)(1)(ii): N/A
 - c. Interstate Waters (a)(1)(iii): N/A
 - d. Impoundments (a)(2): N/A
 - e. Tributaries (a)(3): N/A
 - f. Adjacent Wetlands (a)(4): N/A
 - g. Additional Waters (a)(5): N/A

8. NON-JURISDICTIONAL AQUATIC RESOURCES AND FEATURES

⁶ 33 CFR 329.9(a) A waterbody which was navigable in its natural or improved state, or which was susceptible of reasonable improvement (as discussed in § 329.8(b) of this part) retains its character as "navigable in law" even though it is not presently used for commerce, or is presently incapable of such use because of changed conditions or the presence of obstructions.

⁷ This MFR is not to be used to make a report of findings to support a determination that the water is a navigable water of the United States. The district must follow the procedures outlined in 33 CFR part 329.14 to make a determination that water is a navigable water of the United States subject to Section 10 of the RHA.

MVP

SUBJECT: 2023 Rule, as amended, Approved Jurisdictional Determination in Light of *Sackett v. EPA*, 143 S. Ct. 1322 (2023), MVP-2025-01090

- a. Describe aquatic resources and other features within the review area identified in the 2023 Rule as amended as not “waters of the United States” even where they otherwise meet the terms of paragraphs (a)(2) through (5). Include the type of excluded aquatic resource or feature, the size of the aquatic resource or feature within the review area and describe how it was determined to meet one of the exclusions listed in 33 CFR 328.3(b).⁸ N/A
- b. Describe aquatic resources and features within the review area that were determined to be non-jurisdictional because they do not meet one or more categories of waters of the United States under the 2023 Rule as amended (e.g., tributaries that are non-relatively permanent waters; non-tidal wetlands that do not have a continuous surface connection to a jurisdictional water).

This AJD review area is limited to Wetlands 1, 2, and 3 in the Star Environmental, Inc. Wetland Delineation Report dated September 2, 2025. Wetlands 1, 2, and 3 are not a TNW’s, territorial seas, or interstate waters and therefore are not (a)(1) waters. Based on a review of the National Hydrography Dataset (NHD) the nearest waterway and potential RPW is an unnamed tributary located approximately 0.50-mile east of the review area. The WDNR 2ft LiDAR Viewer contours map shows that Wetlands 1, 2, and 3 are concave features with no surface connection to the nearest RPW or TNW. Wetlands 1, 2, and 3 do not physically abut a relatively permanent paragraph (a)(2) impoundment or a jurisdictional (a)(3) tributary. Wetlands 1, 2, and 3 are non-tidal wetlands that lack a continuous surface connection to a relatively permanent water and as such do not meet the definition of adjacent and cannot be evaluated as (a)(4) adjacent wetlands; therefore, Wetlands 1, 2, and 3 are not jurisdictional under the 2023 Revised Definition of ‘Waters of the United States’; Conforming” 88 FR 61964 Final Rule.

9. DATA SOURCES. List sources of data/information used in making determination. Include titles and dates of sources used and ensure that information referenced is available in the administrative record.
 - a. USACE Regulatory Viewer Accessed: November 19, 2025.
 - b. WDNR - Surface Water Data Viewer Accessed: November 19, 2025.
 - c. Google Earth Imagery Accessed: November 19, 2025.

⁸ 88 FR 3004 (January 18, 2023)

MVP

SUBJECT: 2023 Rule, as amended, Approved Jurisdictional Determination in Light of *Sackett v. EPA*, 143 S. Ct. 1322 (2023), MVP-2025-01090

- d. Wisconsin Wetland Inventory, USDA Web Soil Survey, and USGS NHD and Topographic Maps Accessed: November 19, 2025 for Wood County, WI.
- e. USGS 1:24K Quad Name: Pittsville.
- f. Office evaluation conducted on November 19, 2025.

10. OTHER SUPPORTING INFORMATION. N/A

11. NOTE: The structure and format of this MFR were developed in coordination with the EPA and Department of the Army. The MFR's structure and format may be subject to future modification or may be rescinded as needed to implement additional guidance from the agencies; however, the approved jurisdictional determination described herein is a final agency action.

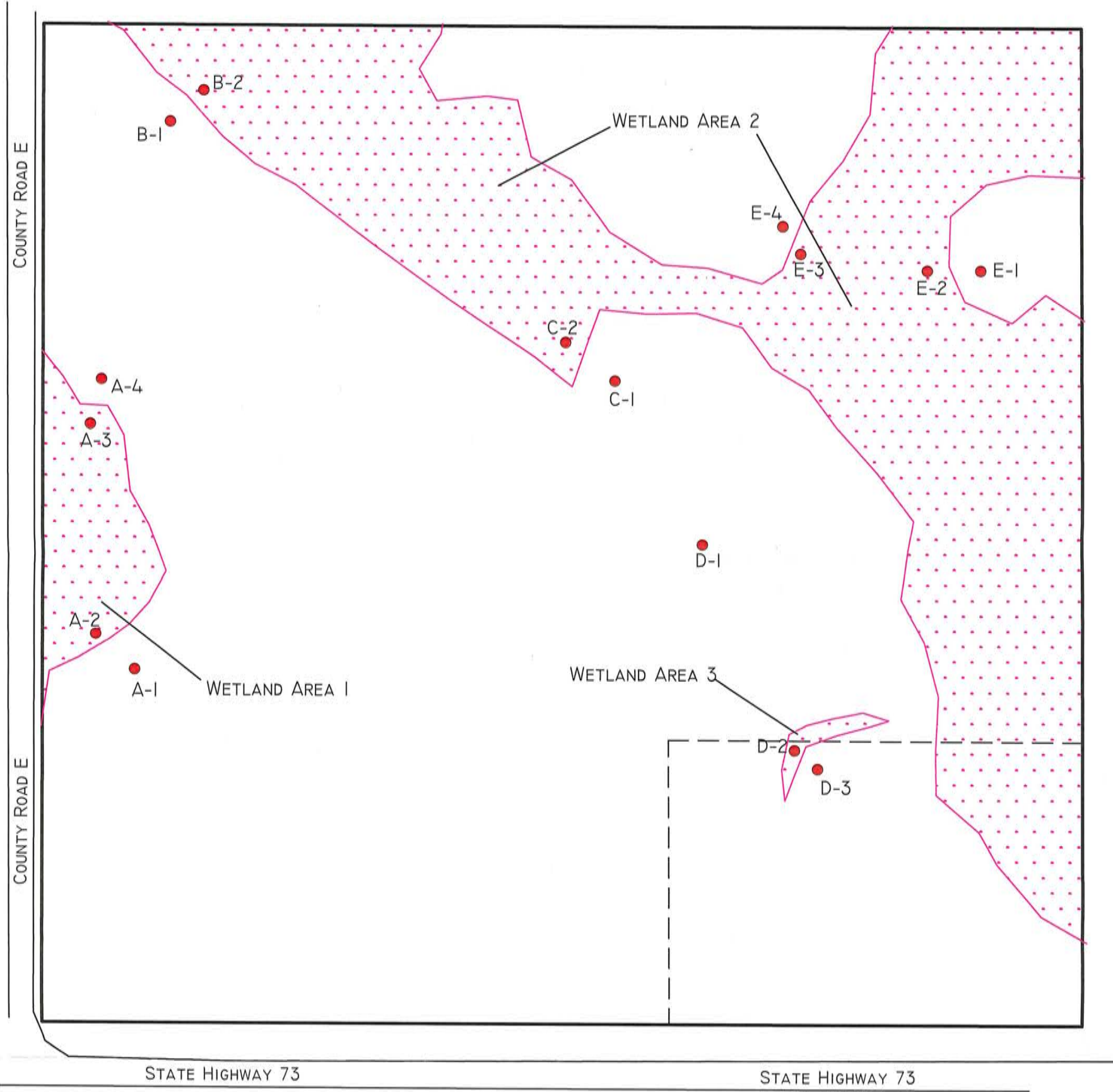
WETLAND DELINEATION MAP

GARDNER PROPERTIES LOCATED IN THE SE1/4, SE1/4, SECTION 24,
TOWNSHIP 23 NORTH - RANGE 3 EAST, TOWN OF WOOD, WOOD COUNTY, WISCONSIN

WETLAND AREA 1
SEDGE MEADOW
0.87 ACRES

WETLAND AREA 2
SEDGE MEADOW
8.85 ACRES

WETLAND AREA 3
SEDGE MEADOW
3,350 SQ. FT.



SCALE: 1" = 150' UNLESS NOTED

THIS IS NOT A CERTIFIED SURVEY MAP

LEGEND:

— WETLAND BOUNDARY

— PROJECT BOUNDARY

— PROPERTY LINE

● SAMPLE POINT

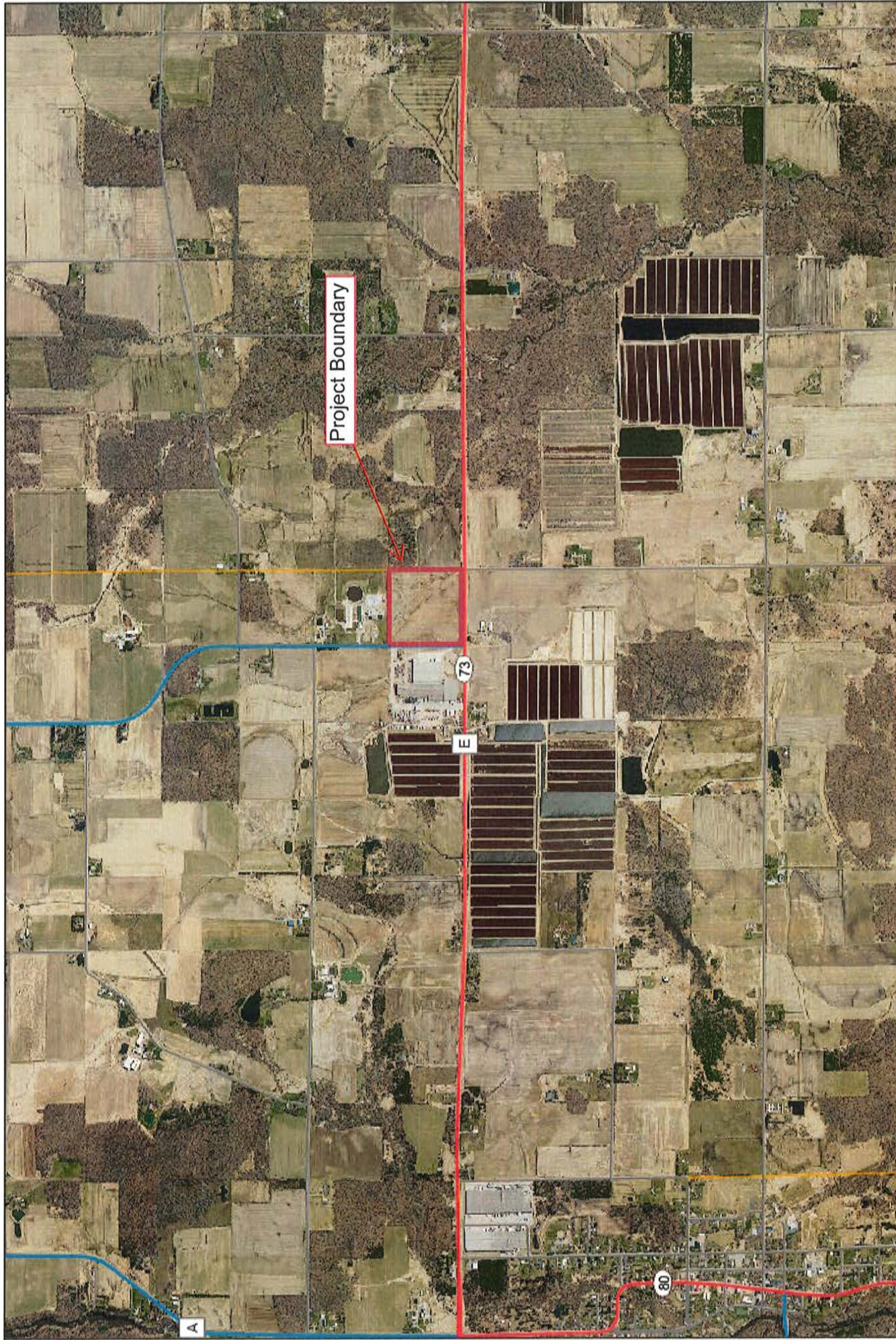
CREATED BY:

STAR ENVIRONMENTAL, INC.
SOILS AND ENVIRONMENTAL STUDIES

STAR ENVIRONMENTAL, INC.
PO BOX 434 MARATHON, WI 54448
PHONE: (715) 443-6115
EMAIL: STARENVIRONMENTAL@HOTMAIL.COM



Figure 7

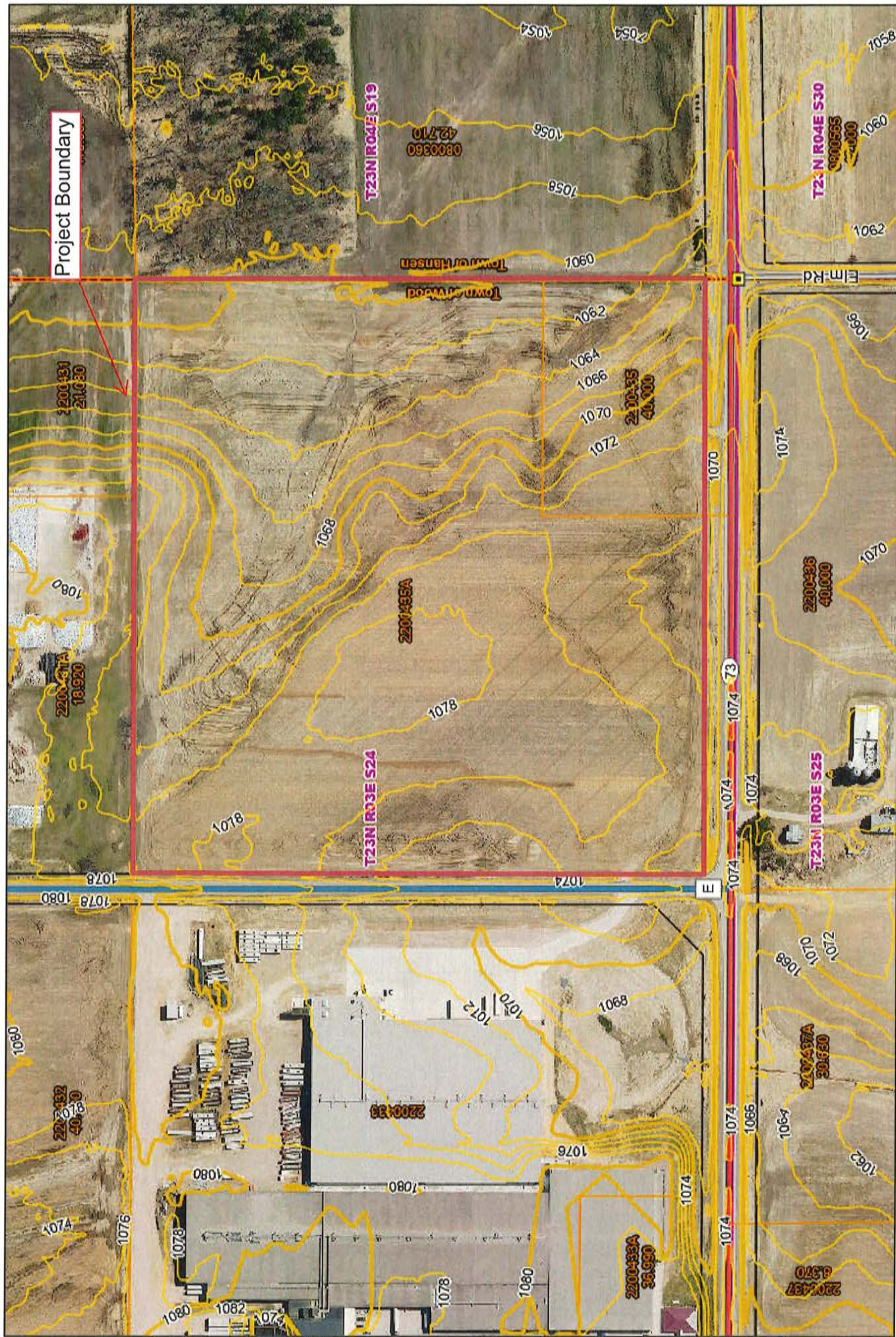


Location Map

Author: Wood County Land Information Office
Date Printed: 5/29/2025 8:49 AM

DISCLAIMER: This map is not a survey. No information on this website is intended to serve as legal evidence of size, shape, location or ownership of real estate or environmental features. Wood County assumes no liability related to the use of this map.

Figure 1



Topographic Map

Author: Wood County Land Information Office

Date Printed: 5/29/2025 8:51 AM

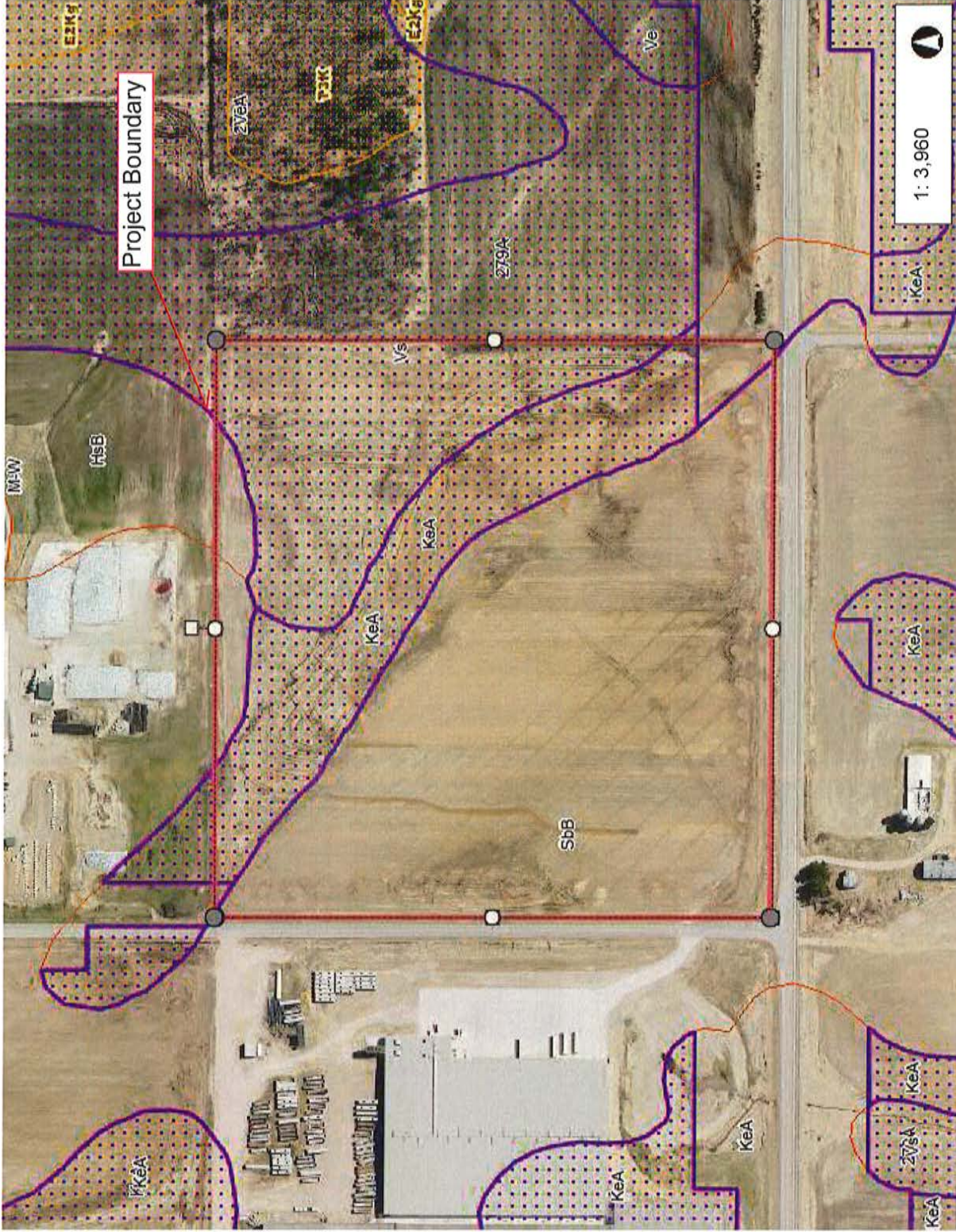
DISCLAIMER: This map is not a survey. No information on this website is intended to serve as legal evidence of size, shape, location or ownership of real estate or environmental features. Wood County assumes no liability related to the use of this map.



Figure 4



Wisconsin Wetland Inventory Map



- Legend**
- USDA Wetspots
 - Maximum Extent Wetland Indit
 - Ponds/Open Water
 - Lake Class Areas
 - Riverine/ditch Class Areas
 - Wetland Class Areas
 - Wetland Class Points
 - Dammed pond
 - Excavated pond
 - Filled/draind wetland
 - Wetland too small to delineate
 - Filled excavated pond
 - Filled Points
 - Wetland Class Areas
 - Filled Areas
 - Soil Mapping Unit
 - Soil Mapping Unit
 - Water
 - Railroads
 - County Boundaries
 - Municipal Boundary
 - State Boundary
 - Tribal Lands
 - Municipality
 - State Boundaries
 - County Boundaries

Notes

DISCLAIMER: The information shown on these maps has been obtained from various sources, and are of varying age, reliability and resolution. These maps are not intended to be used for navigation, nor are these maps an authoritative source of information about legal land ownership or public access. No warranty, expressed or implied, is made regarding accuracy, applicability for a particular use, completeness, or legality of the information depicted on this map. For more information, see the DNR Legal Notices web page: <http://dnr.wi.gov/legal/>

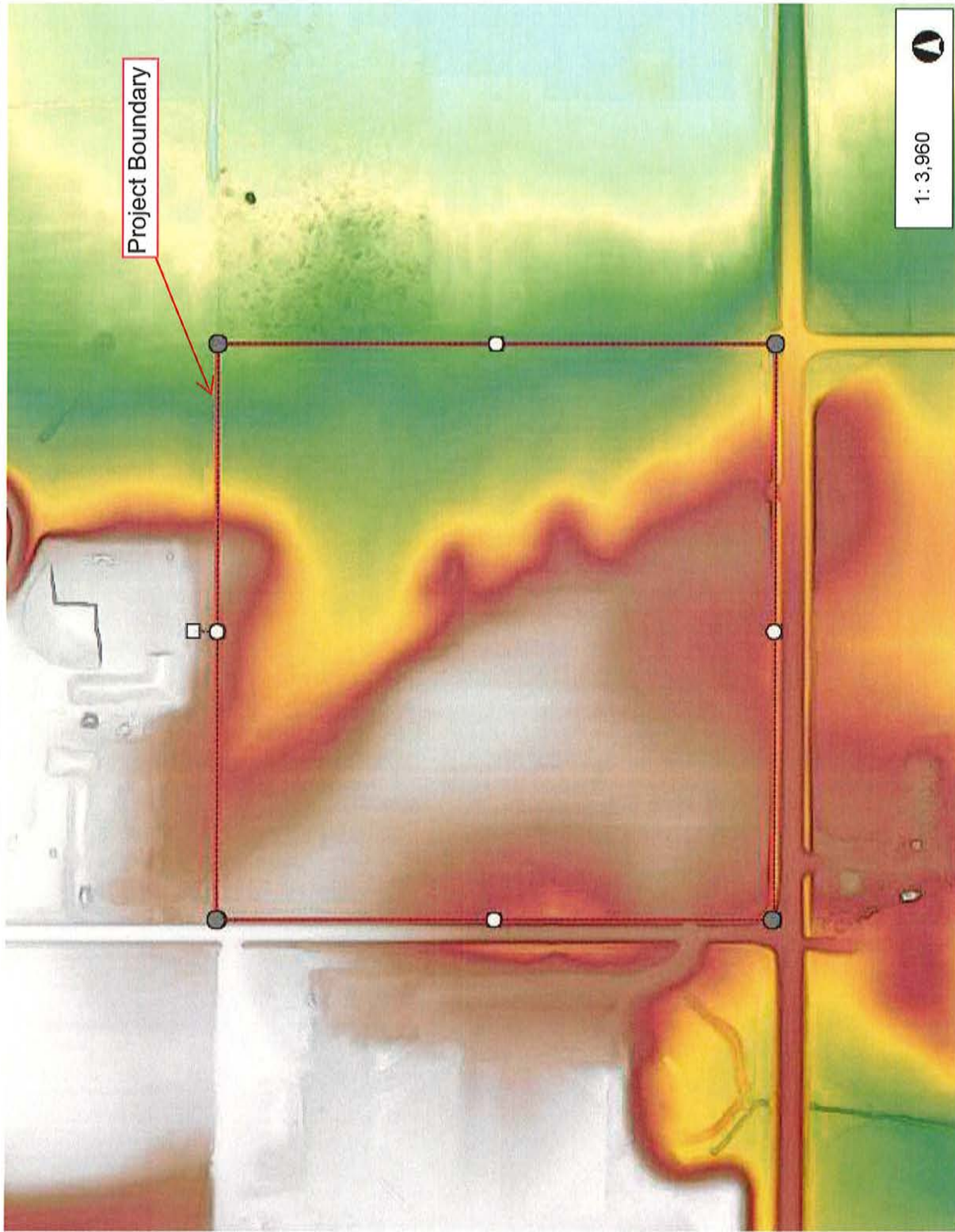


NAD_1983_HARN_Wisconsin_TM
© Latitude Geographics Group Ltd.

Figure 5



LiDAR Map



Legend

- + Railroads
- County Boundaries
- Municipal Boundary
- State Boundary
- Tribal Lands
- Municipality
- State Boundaries
- County Boundaries
- Major Roads
- Interstate Highway
- State Highway
- US Highway
- County and Local Roads
- County HWY
- Local Road
- Railroads
- Tribal Lands

1: 3,960



Notes

DISCLAIMER: The information shown on these maps has been obtained from various sources, and are of varying age, reliability and resolution. These maps are not intended to be used for navigation, nor are these maps an authoritative source of information about legal land ownership or public access. No warranty, expressed or implied, is made regarding accuracy, applicability for a particular use, completeness, or legality of the information depicted on this map. For more information, see the DNR Legal Notices web page: <http://dnr.wi.gov/legal/>

0.1 Miles

0.06

0

NAD_1983_HARN_Wisconsin_TM
© Latitude Geographics Group Ltd.

Figure 6